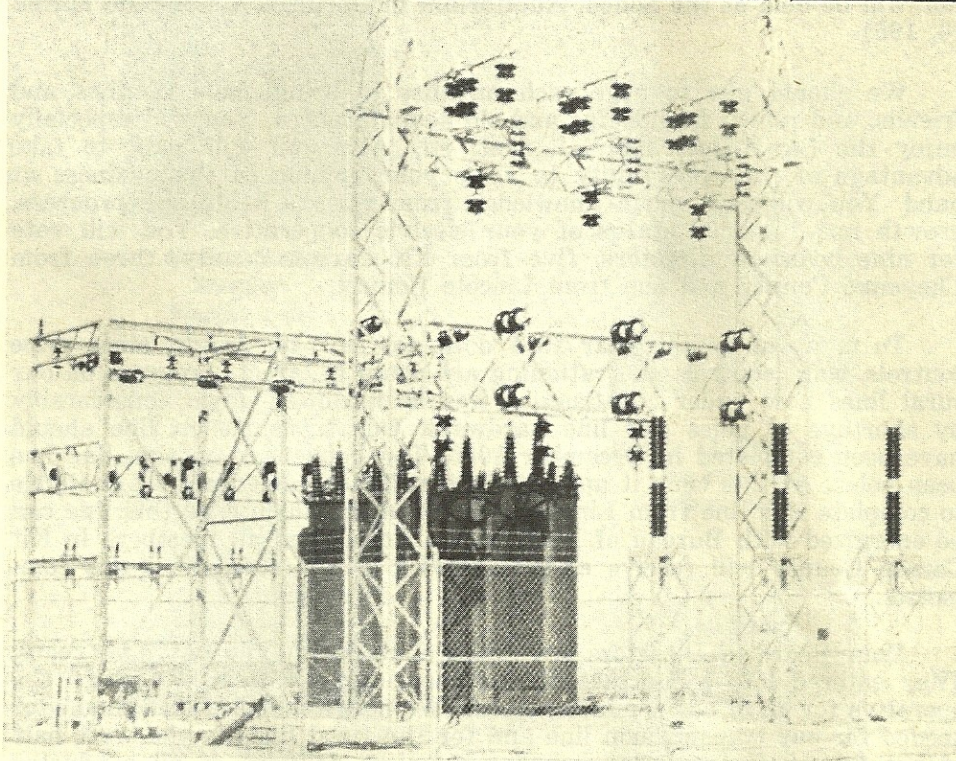


➤ SPECIAL ANNUAL MEETING BULLETIN ◀

K. C. ELECTRIC HIGH LINE NEWS



Main Sub-Station for Kit Carson County is this new 3,000 KVA structure at Stratton, with three operating 1,000 KVA transformers and one reserve emergency standby.

This "sub" will supply all rural areas in Kit Carson county as well as the towns of Bethune, Stratton, Vona, Seibert and Flagler.



K. C. ELECTRIC ASSOCIATION

Serving Kit Carson, Cheyenne and Lincoln Counties

Saturday, March 10, 1951



Burlington, Colorado
